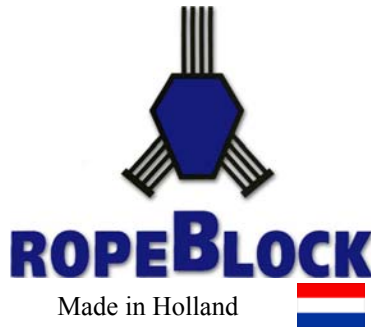




# ROPEBLOCK SPELTER SOCKETS



ISO 9001 Certified

## THE WORLD'S HIGHEST QUALITY SPELTER SOCKETS!



**“GROOVE-LESS” DESIGN** - Ropeblock engineers have conducted the most extensive testing known on spelter sockets and concluded that grooves cast into the bowl of the sockets create stress risers that may ultimately lead to failure of the fitting. For this reason, Ropeblock sockets are designed without grooves.



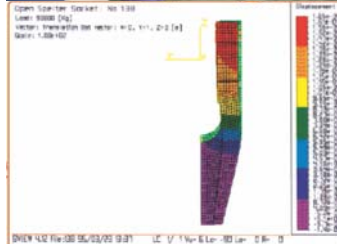
### TRACEABILITY

Cast into the sockets are batch codes in raised letters. Each socket comes with a factory certificate referencing the batch code of that socket.



### MATERIALS

Open & closed spelter sockets are made of cast alloy steel with high mechanical properties. All sockets are suitable for use in a low temperature environment. All materials meet the requirements of an impact value of  $\geq 42$  joule/20° C Charpy-V.



Approved for use by the world's most reputable marine contractors.



BP's Thunderhorse is tethered to the sea-bed with Ropeblock sockets.



North Sea Tested!



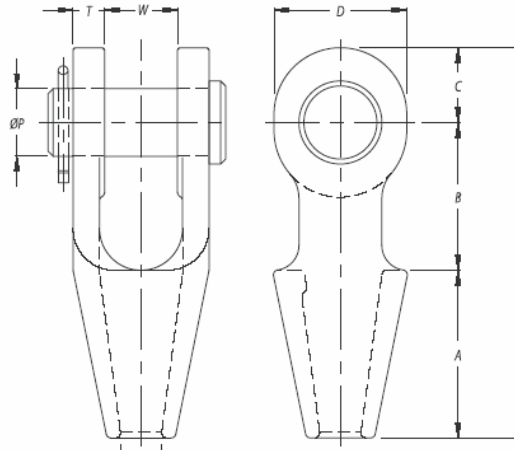


# OPEN SPELTER SOCKETS



**ROPEBLOCK**

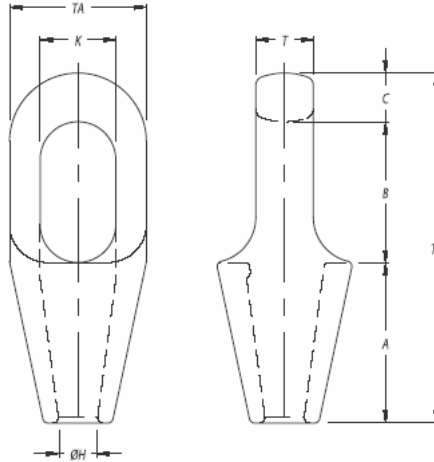
Made in Holland



Ropeblock spelter sockets are rated at 100% efficiency as related to the breaking strength of the IWRC wire rope used.

Model No.	MBL (UStons)	Rope ø		Strand ø		Dimensions (inch)									Wt (lbs)
		(mm)	(inch)	(mm)	(inch)	A	B	C	D	øH	up	T	TL	W	
OSS 198	22	11 - 13	7/16 - 1/2			2 1/2	2	1	2	1/2	1	1/2	5 1/2	1	2.2
OSS 199	28	14 - 16	9/16 - 5/8	13	1/2	3	2 1/2	1 1/4	2 1/4	5/8	1 1/8	1/2	6 3/4	1 1/4	4
CSS 100	44	18 - 19	3/4	14 - 16	9/16 - 5/8	3 1/2	3	1 5/8	2 3/4	7/8	1 3/8	5/8	8 1/8	1 1/2	7
OSS 104	61	20 - 22	7/8	18 - 19	3/4	4	3 1/2	1 3/4	3 1/8	1	1 5/8	3/4	9 1/4	1 3/4	10
OSS 108	83	23 - 26	1	20 - 22	7/8	4 1/2	4	2 3/8	4	1 1/8	2	7/8	10 7/8	2	18
OSS 111	99	27 - 30	1 1/8	23 - 26	1	5	4 1/2	2 1/2	4 1/2	1 1/4	2 1/4	1	12	2 1/4	24
OSS 115	138	31 - 36	1 1/4 - 1 3/8	27 - 28	11/16 - 1 1/8	5 1/2	5	2 7/8	5	1 1/2	2 1/2	1 1/8	13 3/8	2 1/2	35
OSS 118	165	37 - 39	1 1/2	30 - 32	1 3/16 - 1 1/4	6	6 3/8	3 1/8	5 1/2	1 5/8	2 3/4	1 1/4	15 1/2	3	51
OSS 120	187	40 - 42	1 5/8	33 - 35	1 5/16 - 1 3/8	6 1/2	6 1/2	3 1/2	6	1 3/4	3	1 3/8	16 1/2	3	60
OSS 125	248	43 - 48	1 3/4 - 1 7/8	36 - 40	1 7/16 - 1 5/8	7 1/2	7	4	7	2	3 1/2	1 1/2	18 1/2	3 1/2	90
OSS 128	309	49 - 54	2 - 2 1/8	42 - 45	1 5/8 - 1 3/4	8 1/2	9	4 1/4	7 5/8	2 1/4	3 3/4	1 3/4	21 3/4	4	128
OSS 130	397	55 - 60	2 1/4 - 2 3/8	46 - 48	1 13/16 - 1 7/8	9	9 7/8	4 3/4	8 1/4	2 1/2	4 1/4	2	23 5/8	4 1/2	187
OSS 132	468	61 - 68	2 1/2 - 2 5/8	50 - 54	2 - 2 1/8	9 3/4	10 3/4	5 1/4	9 1/4	2 7/8	4 3/4	2 3/8	25 3/4	5	260
OSS 135	507	69 - 75	2 3/4 - 2 7/8	56 - 62	2 1/4 - 2 1/2	11	11	5 1/2	9 1/2	3 1/8	5	2 7/8	27 1/2	5 1/4	342
OSS 138	617	76 - 80	3 - 3 1/8	64 - 67	2 1/2 - 2 5/8	12	11 1/4	5 3/4	10	3 3/8	5 1/4	3	29	5 3/4	381
OSS 140	689	81 - 86	3 1/4 - 3 3/8	69 - 76	2 3/4 - 3	13	11 3/4	6 1/4	11 3/4	3 5/8	5 1/2	3 1/8	31	6 1/4	507
OSS 142	794	87 - 93	3 1/2 - 3 5/8	78 - 86	3 1/16 - 3 3/8	14	12 1/2	7	12 1/2	3 7/8	6	3 1/4	33 1/2	6 3/4	584
OSS 144	965	94 - 102	3 3/4 - 4	88 - 96	3 7/16 - 3 3/4	15	13 1/2	7 1/2	13 3/4	4 1/4	7	3 1/2	36	7 1/2	816
OSS 146	1323	108 - 115	4 1/4 - 4 1/2	98 - 110	3 7/8 - 4 5/16	17 3/4	18 7/8	8 1/2	15 3/4	5	7 1/2	4	45 1/8	8	1158
OSS 150	1433	120 - 130	4 3/4 - 5	112 - 124	4 7/16 - 4 7/8	19 3/4	19 3/4	11	22	5 1/2	9 7/8	4 3/8	50 1/2	8 7/8	1985

# CLOSED SPELTER SOCKETS



## ROPEBLOCK

Made in Holland



Ropeblock spelter sockets are rated at 100% efficiency as related to the breaking strength of the IWRC wire rope used.

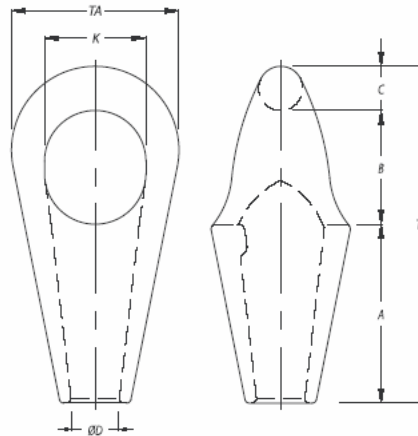
Model No.	MBL (UStons)	Rope ø		Strand ø		Dimensions (inch)								
		(mm)	(inch)	(mm)	(inch)	A	B	C	øH	K	T	TA	TL	Wt (lbs)
CSS 298	22	11 - 13	7/16 - 1/2			2 1/2	2 1/2	2 3/8	1/2	1 1/4	5/8	2	7 3/8	1.5
CSS 299	28	14 - 16	9/16 - 5/8	13	1/2	3	3	2 1/2	5/8	1 1/2	7/8	2 5/8	8 1/2	2.4
CSS200	44	18 - 19	3/4	14 - 16	9/16 - 5/8	3 1/2	3	1	7/8	1 5/8	1 1/4	3	7 1/2	4.5
CSS 201	61	20 - 22	7/8	18 - 19	3/4	4	3 1/2	1 1/4	1	1 7/8	1 1/2	3 5/8	8 3/4	8
CSS 204	83	23 - 26	1	20 - 22	7/8	4 1/2	4	1 3/8	1 1/8	2 1/4	1 3/4	4	9 7/8	12
CSS 207	99	27 - 30	1 1/8	23 - 26	1	5	4 1/2	1 1/2	1 1/4	2 1/2	2	4 1/2	11	15
CSS 212	138	31 - 36	1 1/4 - 1 3/8	27 - 28	11/16 - 11/8	5 1/2	5	1 5/8	1 1/2	2 3/4	2 1/4	5	12 1/8	21
CSS 215	165	37 - 39	1 1/2	30 - 32	1 3/16 - 1 1/4	6	6	2	1 5/8	3 1/8	2 1/2	5 3/8	14	28
CSS 217	187	40 - 42	1 5/8	33 - 35	1 5/16 - 1 3/8	6 1/2	6 3/4	2 1/8	1 3/4	3 1/4	2 3/4	5 3/4	15 3/8	37
CSS 219	248	43 - 48	1 3/4 - 1 7/8	36 - 40	1 7/16 - 1 5/8	7 1/2	7 3/4	2 1/8	2	3 5/8	3	6 3/4	17 3/8	57
CSS 222	309	49 - 54	2 - 2 1/8	42 - 45	1 5/8 - 1 3/4	8 1/2	8 7/8	2 1/2	2 1/4	4	3 1/4	7 1/2	19 7/8	83
CSS 224	397	55 - 60	2 1/4 - 2 3/8	46 - 48	1 13/16 - 1 7/8	9	9 3/4	2 7/8	2 1/2	4 3/8	3 5/8	8 1/2	21 5/8	110
CSS 226	468	61 - 68	2 1/2 - 2 5/8	50 - 54	2 - 2 1/8	9 3/4	10 5/8	3 1/8	2 7/8	5 1/2	4	9 1/2	23 1/2	143
CSS 227	507	69 - 75	2 3/4 - 2 7/8	56 - 62	2 1/4 - 2 1/2	11	11 1/4	3 1/8	3 1/8	6 1/4	5 5/8	10 3/4	25 3/8	207
CSS 228	617	76 - 80	3 - 3 1/8	64 - 67	2 1/2 - 2 5/8	12	11 1/4	3 1/4	3 3/8	6 3/4	5 1/4	11 1/2	26 1/2	243
CSS 229	689	81 - 86	3 1/4 - 3 3/8	69 - 76	2 3/4 - 3	13	12 1/4	4	3 5/8	7 1/4	5 3/4	12 1/2	29 1/4	320
CSS 230	794	87 - 93	3 1/2 - 3 5/8	78 - 86	3 1/16 - 3 3/8	14	13	4	3 7/8	7 3/4	6 1/4	13	31	370
CSS 231	965	94 - 102	3 3/4 - 4	88 - 96	3 7/16 - 3 3/4	15	14	4 1/4	4 1/4	8 1/2	7	14 1/4	33 1/4	463
CSS 233	1323	108 - 115	4 1/4 - 4 1/2	98 - 110	3 7/8 - 4 5/16	17 3/4	16 3/4	5	5	9 1/4	7 1/2	16	39 1/2	728
CSS 240	1433	120 - 130	4 3/4 - 5	112 - 124	4 7/16 - 4 7/8	19 3/4	18 3/4	5 3/8	5 1/2	10 1/4	8 1/4	20 1/4	43 7/8	1212

# SHORT BOW MOORING SOCKETS



## ROPEBLOCK

Made in Holland



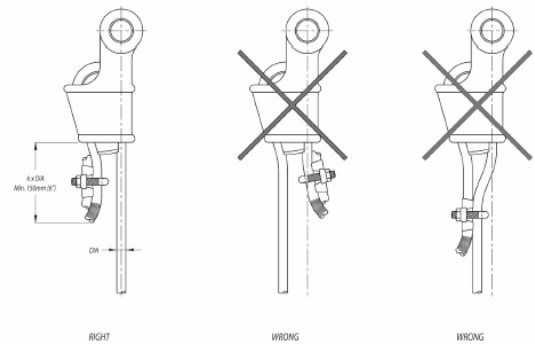
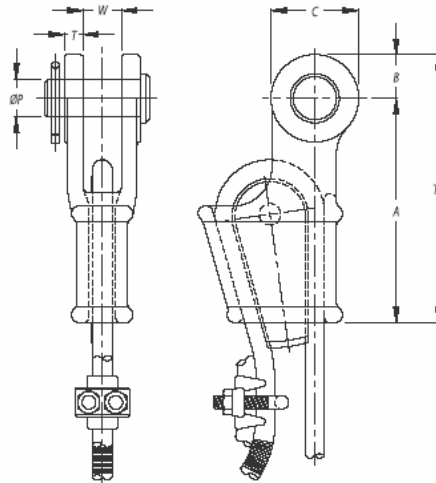
Ropeblock mooring sockets are made of cast alloy steel possessing extremely high mechanical properties. This is done to match the high breaking strengths of the high tensile strength wire ropes used today for mooring deepwater structures.

Model No.	MBL (UStons)	Rope ø		Dimensions (inch)							
		(mm)	(inch)	A	B	C	øD	K	TA	TL	Wt (lbs)
SBS 517	176	37 - 42	1 1/2 - 1 5/8	6 3/8	4	1 1/2	1 3/4	3 5/8	5 3/4	11 3/4	27
SBS 519	220	43 - 48	1 3/4 - 1 7/8	7 3/8	4 3/4	1 5/8	2	4 1/2	7	13 3/4	33
SBS 522	276	49 - 54	2 - 2 1/8	8	5 1/4	2 1/8	2 1/4	4 3/4	7 7/8	15 3/8	48
SBS 524	353	55 - 60	2 1/4 - 2 3/8	9	5 7/8	2 3/8	2 1/2	5 3/8	8 5/8	17 1/4	60
SBS 526	441	61 - 68	2 1/2 - 2 5/8	8 3/4	6 1/2	2 5/8	2 7/8	6	9 7/8	17 7/8	88
SBS 527	551	69 - 75	2 3/4 - 2 7/8	11 1/4	7	3	3 1/8	6 1/2	10 3/4	21 1/4	120
SBS 528	661	76 - 80	3 - 3 1/8	12 3/8	7 5/8	3	3 3/8	6 7/8	10 3/4	23	165
SBS 529	772	81 - 86	3 1/4 - 3 3/8	12 7/8	8 1/2	3 1/4	3 5/8	7 5/8	12 1/2	24 5/8	178
SBS 530	882	87 - 93	3 1/2 - 3 5/8	14	8 5/8	3 5/8	3 7/8	8	13 3/4	26 1/4	254
SBS 531	992	94 - 102	3 3/4 - 4	14 3/8	9 1/4	4	4 1/8	8 1/2	14 3/4	27 5/8	287
SBS 533	1102	108 - 115	4 1/4 - 4 1/2	16 1/2	10 5/8	4 3/8	4 1/2	9 1/2	16 1/8	31 1/2	396



## ROPEBLOCK

Made in Holland



In relation to the breaking strength of IWRC wire ropes, Ropeblock wedge sockets are rated at 80% efficiency on 6 to 8 stranded ropes and 75% on high performance crane ropes.

Model No.	MBL (UStons)	Rope ø		Dimensions (inch)							
		(mm)	(inch)	A	B	C	øP	T	TL	W	Wt (lbs)
OWS 0.25	9	7 - 8	5/16	4 3/8	3/4	3/8	5/8	3/8	5 1/8	3/4	1.8
OWS 0.5	13	9 - 10	3/8	5 1/2	1	1 3/4	3/4	7/16	6 1/2	7/8	3.7
OWS 1	22	11 - 13	1/2	5 3/4	1 1/8	2 1/4	1	1/2	6 7/8	1	4.6
OWS 2	28	14 - 16	5/8	7	1 3/8	2 3/4	1 1/8	19/32	8 3/8	1 1/4	8.8
OWS 3	44	18 - 19	3/4	8 3/8	1 1/2	3 1/8	1 3/8	5/8	9 7/8	1 1/2	15.4
OWS 4	61	20 - 22	7/8	9 1/2	1 7/8	3 3/4	1 5/8	3/4	11 3/8	1 3/4	22
OWS 5	83	24 - 26	1	10 3/4	2 1/8	4 3/8	2	7/8	12 7/8	2	33
OWS 6	99	27 - 29	1 1/8	12 1/4	2 1/2	5 1/8	2 1/4	1	14 3/4	2 1/4	46
OWS 7	121	30 - 32	1 1/4	13 3/4	2 7/8	5 3/4	2 1/2	1 1/8	16 5/8	2 1/2	68
OWS 8	138	34 - 36	1 3/8	15 3/4	3	5 7/8	2 1/2	1 1/8	18 3/4	2 3/4	82
OWS 9	165	37 - 39	1 1/2	17 3/4	3 1/8	5 1/2	2 3/4	1 1/4	20 7/8	3	112
OWS 10	187	40 - 42	1 5/8	19 5/8	3 1/2	6 1/4	3	1 3/8	23 1/8	3	141
OWS 11	248	43 - 48	1 3/4 - 1 7/8	21 5/8	4	7 1/4	3 1/2	1 1/2	25 5/8	3 1/2	212
OWS 12	309	49 - 52	2	25 1/4	4 1/8	7 5/8	3 3/4	1 3/4	29 3/8	4	287
OWS 13	397	54 - 58	2 1/4	26	5	9	4 1/4	2 1/4	31	4 1/2	397
OWS 14	468	60 - 68	2 1/2	32 7/8	5 3/8	9 7/8	4 3/4	2 3/8	38 1/4	5	606
OWS 15	507	72 - 76	3	39 3/8	5 7/8	10 5/8	5 1/4	3	45 1/4	5 3/4	970



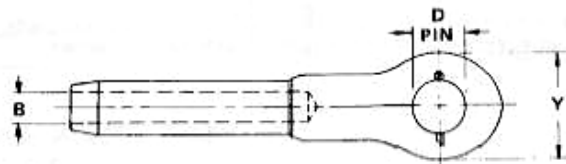
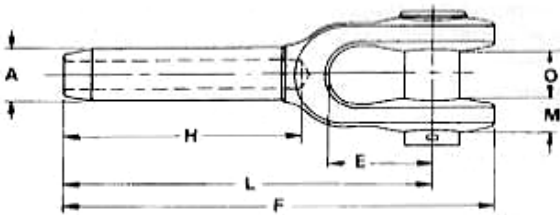
# OPEN SWAGE SOCKETS



**UPSON-WALTON™**  
Quality Sleeves, Swage Sockets  
and Boom Pendant Sockets



- Forged from special C-1035 steel, fine grain, special bar quality.
- Spheroidized annealed for cold swaging.
- Swage sockets are recommended for use on 6x19 or 6x37 IWRC regular lay wire ropes. They are also satisfactory on galvanized bridge ropes. They are not recommended for use on fiber core or lang lay wire ropes.
- Sockets properly applied have an efficiency rating of 100%. This is based on the catalog strength of the wire rope.



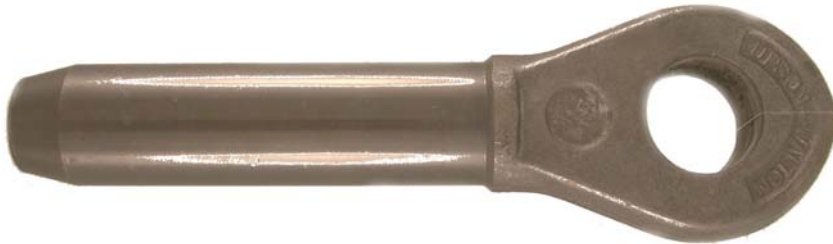
ROPE DIA. INCHES	DIMENSIONS IN INCHES										APPR. WT. EACH LBS.	A/S
	A	B	D	E	F	H	L	M	O	Y		
1/4	0.495	0.272	0.688	1 1/2	4 3/4	2 1/8	4	5/16	11/16	1 3/8	0.57	0.438
5/16	0.77	0.339	0.812	1 3/4	6 1/4	3 3/16	5 5/16	13/32	13/16	1 5/8	1.24	0.688
3/8	0.77	0.406	0.812	1 3/4	6 1/4	3 3/16	5 5/16	13/32	13/16	1 5/8	1.2	0.688
7/16	0.982	0.484	1.000	2	7 13/16	4 1/4	6 11/16	1/2	1	2	2.45	0.875
1/2	0.982	0.547	1.000	2	9 9/16	4 1/4	6 11/16	1/2	1	2	2.4	0.875
9/16	1.257	0.609	1.190	2 1/4	9 9/16	5 5/16	8 1/8	5/8	1 1/4	2 1/2	4.8	1.125
5/8	1.257	0.672	1.190	2 1/4	11 11/16	5 5/16	8 1/8	5/8	1 1/4	2 1/2	4.5	1.125
3/4	1.545	0.796	1.380	2 3/4	13 5/8	6 3/8	10	3/4	1 1/2	3	7.8	1.375
7/8	1.7	0.938	1.630	3 1/4	15 5/8	7 7/16	11 5/8	15/16	1 3/4	3 3/8	11.8	1.5
1	1.975	1.062	2.000	3 3/4	17 1/2	8 1/2	13 3/8	1 1/32	2	4	17.8	1.75
1 1/8	2.245	1.188	2.250	4 1/4	17 1/2	9 9/16	15	1 3/16	2 1/4	4 1/2	28.9	2
1 1/4	2.525	1.328	2.500	4 3/4	19 7/16	10 5/8	16 1/2	1 3/16	2 1/2	5	36.2	2.25
1 3/8	2.8	1.453	2.500	5 1/4	21 1/4	11 11/16	18 1/8	1 5/16	2 1/2	5 1/4	47.7	2.5
1 1/2	3.075	1.578	2.750	5 3/4	23 1/4	12 3/4	19 3/4	1 7/16	3	5 3/4	64.4	2.75
1 3/4	3.385	1.859	3.500	6 3/4	27 1/8	14 7/8	23	1 11/16	3 1/2	7	93.4	3
2	3.935	2.109	3.750	8	31 7/16	17	26 3/4	1 13/16	4	8	148	3.5



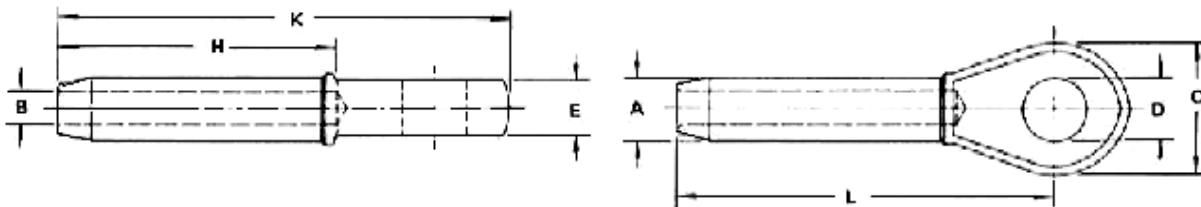
# CLOSED SWAGE SOCKETS



**UPSON-WALTON™**  
Quality Sleeves, Swage Sockets  
and Boom Pendant Sockets



- Forged from special C-1035 steel, fine grain, special bar quality.
- Spheroidized annealed for cold swaging.
- Swage sockets are recommended for use on 6x19 or 6x37 IWRC regular lay wire ropes. They are also satisfactory on galvanized bridge ropes. They are not recommended for use on fiber core or lang lay wire ropes.
- Sockets properly applied have an efficiency rating of 100%. This is based on the catalog strength of the wire rope.



ROPE DIA. INCHES	DIMENSIONS IN INCHES								APPR. WT. EACH LBS.	A/S
	A	B	C	D	E	H	K	L		
1/4	0.495	0.272	1 7/16	0.75	1/2	2 1/8	4 3/8	3 1/2	0.35	0.438
5/16	0.77	0.339	1 11/16	0.875	11/16	3 3/16	5 1/2	4 1/2	0.77	0.688
3/8	0.77	0.406	1 11/16	0.875	11/16	3 3/16	5 1/2	4 1/2	0.73	0.688
7/16	0.982	0.484	2	1.063	7/8	4 1/4	6 15/16	5 3/4	1.47	0.875
1/2	0.982	0.547	2	1.063	7/8	4 1/4	6 15/16	5 3/4	1.38	0.875
9/16	1.257	0.609	2 1/2	1.25	1 1/8	5 5/16	8 3/4	7 1/4	2.9	1.125
5/8	1.257	0.672	2 1/2	1.25	1 1/8	5 5/16	8 3/4	7 1/4	2.8	1.125
3/4	1.545	0.796	3	1.438	1 5/16	6 3/8	10 3/8	8 5/8	5.16	1.375
7/8	1.7	0.938	3 1/2	1.688	1 1/2	7 7/16	12 1/8	10 1/8	7.4	1.5
1	1.975	1.062	4	2.063	1 3/4	8 1/2	13 3/4	11 1/2	11.2	1.75
1 1/8	2.245	1.188	4 1/2	2.313	2	9 9/16	15 1/4	12 3/4	16	2
1 1/4	2.525	1.328	5	2.563	2 1/4	10 5/8	17 1/4	14 3/8	22.7	2.25
1 3/8	2.8	1.453	5 1/4	2.563	2 1/4	11 11/16	18 7/8	15 3/4	29	2.5
1 1/2	3.075	1.578	5 1/2	2.813	2 1/2	12 3/4	20 3/8	17	37.5	2.75
1 3/4	3.385	1.859	6 3/4	3.563	3	14 7/8	24	20	55.7	3
2	3.935	2.109	7 3/4	3.813	3 1/4	17	27 1/2	23	90	3.5