



“ZERO DEFECTS, STRIVING TO BE THE BEST”

- Over 600 clients in 43 countries worldwide!
- Over 27 years of experience in the manufacture of equipment for the rigging industry.
- An ISO 9000 Certified Company.
- Innovators of the FAST FLEMISH SYSTEM.

Hydraulic Wire Rope Presses To
4,000 Tons Capacity



Hydraulic Test Machines to 2,600
Tons Capacity



SPEED & EFFICIENCY

- Swage Flemish eye sleeves in just two presses.
- No need to change dies for sleeves over 1" - up to 2-1/2".
- Reduces cycles on swaging press to increase machine life.

Flemish eye swaging is achieved in just (2) simple and controlled swaging steps. Sleeves manufactured by Wirop, as well as, other manufacturers can be used. The after swage dimensions are the same as the after swage dimensions of sleeves swaged in conventional dies.

THE PROCESS IS SIMPLE!

1.) Place the Flemish Eye steel sleeves on the "Flat Side" (Notched Side) by lining the center line of sleeves with the reference center line (see Figure A) of the die as shown in Figure B.

2.) Close the die completely. The sleeves will be swaged to 80% of diameter A and turned into an oval shape as shown in Figure C.

3.) Turn the swaged sleeve 90 degrees and place the sleeve on the die as shown in Figure D.

4.) Close the dies completely as shown in Figure E.



Fig. A

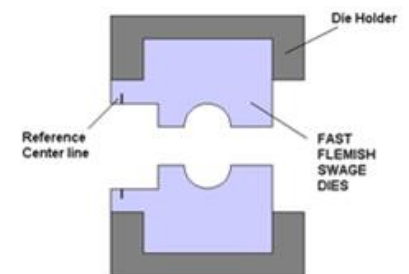


Fig. B

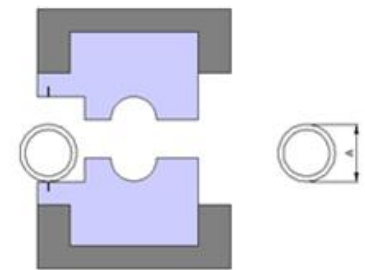


Fig. C

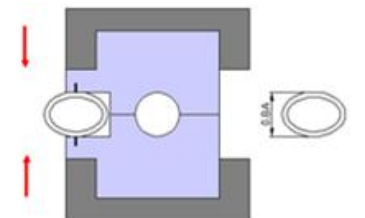


Fig. D

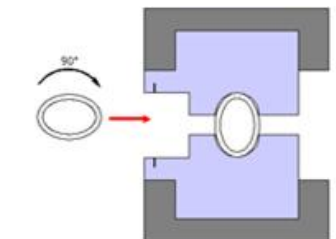
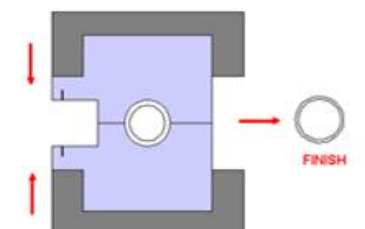


Fig. E



MACHINE FEATURES

- Quiet operation.
- User friendly PLC electric control system.
- Press body is made of solid, one-piece alloy steel casting. No linkage or excessive moving parts that can wear or crack.
- Under or over-swaging is eliminated by a dial selection that sets pressure according to size of sleeve.
- Three operational settings—Automatic, Automatic Return and Manual. Automatic mode allows for machine to operate at pre-fixed settings. Automatic return allows swaging when foot pedal is depressed and will retract automatically when foot pedal is released.
- Distance between die openings can be set manually should operator want to speed up cycle times.
- Controls equipped with an emergency shut-off switch.
- Machine can be operated by foot pedal switch or by hand on the control panel.
- Die holders can be made to accept other manufacturer's dies.



Model	WP-150C	WP-300C	WP-600C
Type	C-Frame	C-Frame	C-Frame
Max. Pressure Capacity (U.S. Tons)	162 Tons	347 Tons	666 Tons
Power Supply (HP)	5	7.5	15
Max. Oil Pressure (psi)	4350	4350	4350
Max. Piston Stroke (in.)	2.16	2.75	3.35
Speed When Not Under Load (in./sec.)	1	0.46	0.52
Speed Under Load (in./sec.)	0.14	0.07	0.09
Reverse Speed (in./sec.)	1.33	0.57	0.67
Operating Height (in.)	44.5	48.8	52.76
Max. Size Aluminum Sleeves (in.) - One Stage	5/8"	1"	1-3/8"
Dimensions L x W x H (in.)	51 x 24 x 63	60 x 30 x 65	79 x 37 x 77
Approximate Weight (lbs.)	3278	6941	16500
Max. Size Aluminum Sleeves (in.) - Two Stage	3/4"	1-1/4"	1-5/8"
Max. Size Flemish Eye Steel Sleeves (in.)	3/4"	1-1/8"	1-1/2"
Max. Size Swage Sockets - Full Shank (in.)	3/8"	5/8"	1"
Max. Size Swage Sockets - Progressive (in.)	1/2"	3/4"	1-1/4"

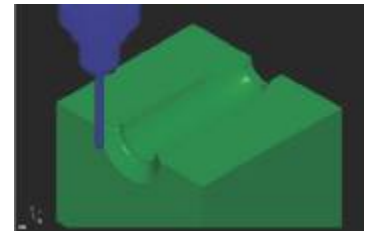


MACHINE FEATURES

- Quiet operation.
- User friendly PLC electric control system.
- Press body is made of solid, one-piece alloy steel casting. No linkage or excessive moving parts that can wear or crack.
- Under or over-swaging is eliminated by a dial selection that sets pressure according to size of sleeve.
- Three operational settings—Automatic, Automatic Return and Manual. Automatic mode allows for machine to operate at pre-fixed settings. Automatic return allows swaging when foot pedal is depressed and will retract automatically when foot pedal is released.
- Distance between die openings can be set manually should operator want to speed up cycle times.
- Controls equipped with an emergency shut-off switch.
- Machine can be operated by foot pedal switch or by hand on the control panel.
- Die holders can be made to accept other manufacturer's dies.



Model	WP-300H	WP-600H	WP-1000	WP-1500	WP-2000	WP-3000	WP-4000
Type	2-Column	2-Column	2-Column	2-Column	2-Column	2-Column	2-Column
Max. Pressure Capacity (U.S. Tons)	347 Tons	666 Tons	1158 Tons	1619 Tons	2235 Tons	3368 Tons	4518 Tons
Power Supply (HP)	7.5	15	20	24	30	75	75
Max. Oil Pressure (psi)	4350	4350	4350	4350	4350	4350	4350
Max. Piston Stroke (in.)	2.75	3.35	3.94	5.11	6.3	7.87	10.23
Speed When Not Under Load (in./sec.)	0.46	0.52	0.38	0.35	0.35	0.31	0.24
Speed Under Load (in./sec.)	0.07	0.09	0.075	0.05	0.07	0.06	0.04
Reverse Speed (in./sec.)	0.57	0.67	0.49	0.67	0.43	0.39	0.3
Operating Height (in.)	44.5	48.8	45.28	49.21	61.4	66.14	66.14
Dimensions L x W x H (in.)	51 x 24 x 63	60 x 30 x 65	79 x 37 x 77	93 x 41 x 89	106 x 53 x 104		
Approximate Weight (lbs.)	3278	6941	16500	24200	40700	61600	74800
Max. Size Aluminum Sleeves (in.) - One Stage	5/8"	1"	1-3/4"	2-1/4"	2-1/2"	3"	3-1/2"
Max. Size Aluminum Sleeves (in.) - Two Stage	1-1/4"	1-5/8"	2"	2-1/2"	3"	3-1/2"	4-1/2"
Max. Size Flemish Eye Steel Sleeves (in.)	1-1/8"	1-1/2"	2-1/2"	3-1/2"	4"	5"	6"
Max. Size Swage Sockets - Full Shank (in.)	5/8"	1"	1"	1-1/4"	1-1/2"	2"	2-1/2"
Max. Size Swage Sockets - Progressive (in.)	3/4"	1-1/4"	1-1/2"	2"	2-1/4"	2-1/2"	2-1/2" is Max. Available



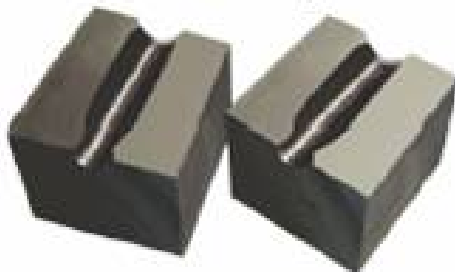
Dies for FFS [Flemish eye steel sleeves]



Dies for Aluminum Ferrules [Form C]



Dies for Flemish Eye Steel Sleeves

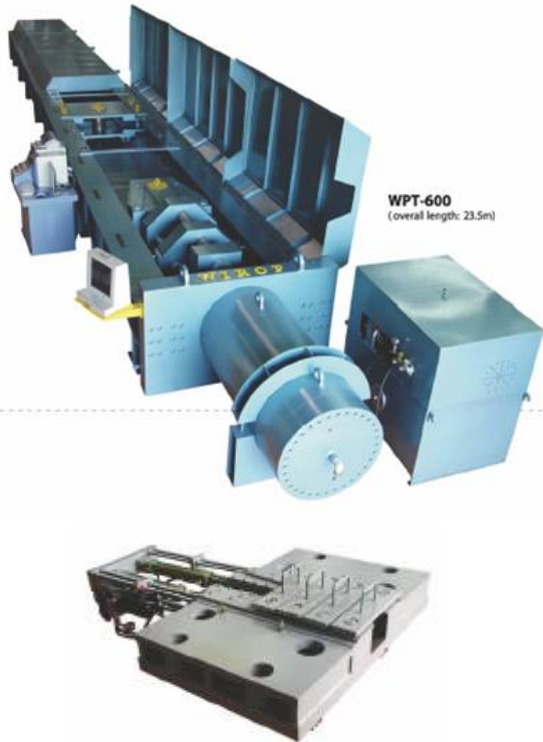


Dies for Swage Socket



Dies for Multi-Stage





Wire Rope Grips

MACHINE FEATURES

- Automatic print out of test certificate with diagram.
- Computer system with analog/digital transmitter.
- Sectional construction for easy transportation.
- Software is Windows XP compatible.
- Machine includes computer, printer, color monitor and testing software.
- Multi-Function Selection-Break, Proof & Hold Test.
- Measures elongation.
- Remote control switch for positioning hook up of test item.
- Fully enclosed hydraulically operated covers.
- Computer controlled test speeds.
- Testing Ratings: 95% of load cell for proof load testing.
75% of load cell for break tests.

Model	WPT-50	WPT-100	WPT-200	WPT-500	WPT-600
Capacity	50 Tons	100 Tons	200 Tons	500 Tons	600 Tons
Standard Useful Testing Length (ft.)	19.7	19.7	19.7	19.7	19.7
Overall Length (ft.)	29.5	34.4	34.4	37.7	37.7
Overall Width (excl. covers) (in.)	52.36	57.48	60.24	77.05	77.05
Width Between Channels (in.)	19	29.1	27.4	60.2	60.2
Max. Testing Width (in.)	33.94	42.44	42.6	32.76	32.76
Overall Height With Covers (in.)	36.3	31.2	35	39.6	39.6
Overall Height W/O Covers (in.)	27.6	23	27.6	23.2	23.2
Standard Cylinder Stroke (in.)	39.4	49.2	49.2	49.2	49.2
Length Of Additional Sections (ft.)	19.7	19.7	19.7	19.7	19.7

