

# LINK PRODUCTS

1 1/2 HEAVY

ALLOY  
USA



Sea-Land  
Distributors



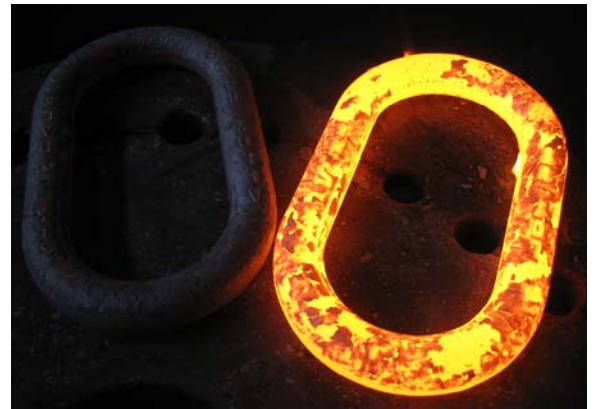
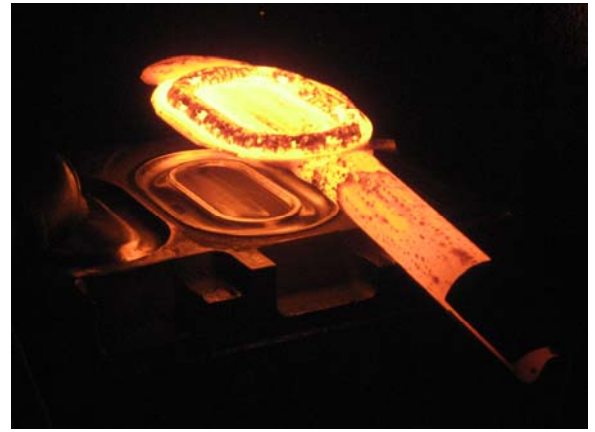
**HALE**  
IRON, INC



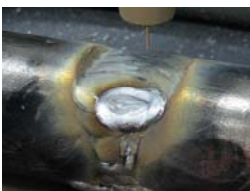


## DROP FORGED LINK FEATURES

- ◆ Alloy Master Links are drop forged from 1/2" up to 2".
- ◆ Links are made of high strength alloy steel to achieve higher working load limits.
- ◆ Drop forging achieves superior grain structure and greater strength.
- ◆ Drop forging in closed dies allows process to produce the desired raised lettering and product identification mark for traceability and permanent visibility.



## WELDED LINKS FEATURES



- ◆ Alloy Master Links are welded in sizes over 2".
- ◆ Links are 100% welded for greater strength than butt welds.
- ◆ After welding, welds are ground smooth for superior finish.





## QUENCH & TEMPERING

- ◆ Quenching and tempering is a heat treatment process that enables steel products to maintain strength and toughness while remaining ductile. This ductility means the product will deform prior to failure. All Hale Iron link products are quenched and tempered.



**QUENCHED & TEMPERED**

## COATING



- ◆ Hale Iron link products are coated with water based, environmentally friendly and durable coating.





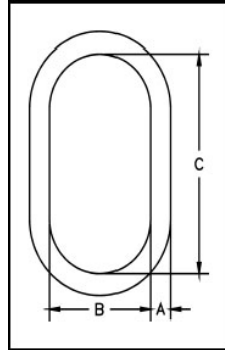
# DOMESTIC ALLOY MASTER LINKS



- Quenched & Tempered Alloy Steel
- Unless noted otherwise, each link is individually proof tested to values shown on the certificate. Proof tested according to ASTM A952 to avoid localized point loading.
- Each link is shipped with a proof test certificate.
- Sizes 2" and under are drop forged. Sizes over 2" are welded and magnetic particle inspected.
- Link identification on drop forged links indicates "Hale"<sup>TM</sup>, Size, Product Identification Code & "Alloy USA" in raised letters.

Never Exceed Working Load Limit

**QUENCHED & TEMPERED**



MADE IN THE U.S.A.

Size "A" (in.)	Size "A" (mm)	Working Load Limit (lbs) @ 5:1 Safety Factor	Working Load Limit (kgs) @ 5:1 Safety Factor	Working Load Limit (lbs) @ 4:1 Safety Factor	Working Load Limit (kgs) @ 4:1 Safety Factor	Weight Each (lbs)	Weight Each (kgs)	"B" (in)	"B" (mm)	"C" (in.)	"C" (mm)
1/2"	12.7	7,000	3,182	8,750	3,977	0.82	0.4	2.50	63.5	5	127
5/8"	15.9	9,000	4,091	11,250	5,114	1.52	0.7	3	76.2	6	152
3/4"	19.0	12,300	5,591	15,375	6,989	2.07	0.9	2.75	69.9	5.5	140
1"	25.4	24,360	11,073	30,450	13,841	4.85	2.2	3.5	88.9	7	178
1-1/4"	31.8	36,200	16,455	45,250	20,568	9.57	4.4	4.38	111.3	8.75	222
1-1/2"	38.1	54,300	24,682	67,875	30,852	16.22	7.4	5.25	133.4	10.5	267
1-3/4"	44.5	84,900	38,591	106,125	48,239	25.22	11.5	6	152.4	12	305
2"	50.8	102,600	46,636	128,250	58,295	37.04	16.8	7	177.8	14	356
2-1/4"	57.2	143,100	65,045	178,875	81,307	54.1	24.6	8	203.2	16	406
2-1/2"	63.5	160,000	72,727	200,000	90,909	67.75	30.8	8	203.2	16	406
2-3/4"	69.9	216,900	98,591	271,125	123,239	87.7	39.9	9.5	241.3	16	406
3"	76.2	228,000	103,636	285,000	129,545	115	52.3	9	228.6	18	457
3-1/4"	82.6	262,200	119,182	327,750	148,977	145	65.9	10	254.0	20	508
3-1/2"	88.9	279,000	126,818	348,750	158,523	200	90.9	12	304.8	24	610
3-3/4"	95.3	336,000	152,727	420,000	190,909	198	90.0	10	254.0	20	508
4"	101.6	373,000	169,545	466,250	211,932	228	103.6	10	254.0	20	508
4-1/4"	108.0	354,000	160,909	442,500	201,136	302	137.3	12	304.8	24	610
4-1/2"	114.3	360,000	163,636	450,000	204,545	345	156.8	14	355.6	28	711
4-3/4"	120.7	389,000	176,818	486,250	221,023	436	198.2	14	355.6	28	711
5"	127.0	395,000	179,545	493,750	224,432	516	234.5	15	381.0	30	762
5-1/2"	139.7	495,900	225,409	619,875	281,761	675	306.8	16.5	419.1	33	838
6"	152.4	606,100	275,500	757,625	344,375	875	397.7	18	457.2	36	914
6-1/2"	165.1	771,400	350,636	964,250	438,295	1114	506.4	19.5	495.3	39	991
7"	177.8	826,500	375,682	1,033,125	469,602	1390	631.8	21	533.4	42	1067
7-1/2"	190.5	969,760	440,800	1,212,200	551,000	1711	777.7	22.5	571.5	45	1143
8"	203.2	1,102,000	500,909	1,377,500	626,136	2075	943.2	24	609.6	48	1219
8-1/2"	215.9	1,322,400	601,091	1,653,000	751,364	2491	1132.3	25.5	647.7	51	1295



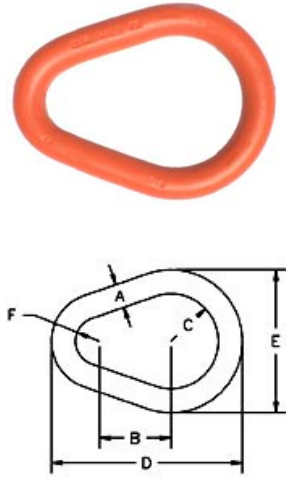
# DOMESTIC ALLOY PEAR SHAPED LINKS



**⚠ Never Exceed Working Load Limit**

- Quenched & Tempered Alloy Steel
- Unless noted otherwise, each link is individually proof tested to values shown on the certificate.
- Each link is shipped with a proof test certificate.
- Sizes 1" and under are drop forged. Sizes over 1" are welded and magnetic particle inspected.
- Link identification on drop forged links indicates "Hale"<sup>TM</sup>, Size, Product Identification Code & "Alloy USA" in raised letters.

Imperial Dimensions								
Size "A" (in.)	Working Load Limit (lbs) @ 5:1 Safety Factor	Working Load Limit (lbs) @ 4:1 Safety Factor	Weight Each (lbs)	"B" (in)	"C" (in.)	"D" (in.)	"E" (in.)	"F" (in.)
1/2"	7,000	8,750	0.55	1.5	1	4	3	0.5
5/8"	9,000	11,250	1.1	1.88	1.25	5	3.75	0.63
3/4"	12,300	15,375	1.76	2.25	1.5	6	4.5	0.75
7/8"	14,000	17,500	2.82	2.63	1.75	7	5.25	0.88
1"	24,360	30,450	4.22	3	2	8	6	1
1-1/8"	30,600	38,250	6.25	3.38	2.25	8.75	6.75	1.13
1-1/4"	36,200	45,250	8.25	3.75	2.5	10	7.5	1.25
1-3/8"	43,000	53,750	11.25	4.13	2.75	11	8.25	1.38
1-1/2"	54,300	67,875	14.25	4.5	3	12	9	1.5
1-5/8"	62,600	78,250	18.5	4.88	3.25	13	9.75	1.63
1-3/4"	84,900	106,125	22.5	5.25	3.5	14	10.5	1.75
1-7/8"	95,800	119,750	29	5.63	3.75	15	11.25	1.88
2"	102,600	128,250	34	6	4	16	12	2
2-1/4"	143,100	178,875	48	6.75	4.5	18	13.5	2.25
2-1/2"	160,000	200,000	66	7.5	5	20	15	2.5
2-3/4"	216,900	271,125	88	8.25	5.5	22	16.5	2.75
3"	228,000	285,000	114	9	6	24	18	3
3-1/4"	262,200	327,750	146	9.75	6.5	26	19.5	3.25
3-1/2"	279,000	348,750	181	10.5	7	28	21	3.5
4"	373,000	466,250	271	12	8	32	24	4
Metric Dimensions								
Size "A" (mm)	Working Load Limit (kgs) @ 5:1 Safety Factor	Working Load Limit (kgs) @ 4:1 Safety Factor	Weight Each (kgs)	"B" (mm)	"C" (mm)	"D" (mm)	"E" (mm)	"F" (mm)
12.7	3,182	3,977	0.25	38.1	25.4	101.6	76.2	12.7
15.9	4,091	5,114	0.50	47.752	31.75	127	95.25	16.002
19	5,591	6,989	0.80	57.15	38.1	152.4	114.3	19.05
22.2	6,364	7,955	1.28	66.802	44.45	177.8	133.35	22.352
25.4	11,073	13,841	1.92	76.2	50.8	203.2	152.4	25.4
28.6	13,909	17,386	2.84	85.852	57.15	222.25	171.45	28.702
31.75	16,455	20,568	3.75	95.25	63.5	254	190.5	31.75
34.9	19,545	24,432	5.11	104.902	69.85	279.4	209.55	35.052
38.1	24,682	30,852	6.48	114.3	76.2	304.8	228.6	38.1
41.3	28,455	35,568	8.41	123.952	82.55	330.2	247.65	41.402
44.45	38,591	48,239	10.23	133.35	88.9	355.6	266.7	44.45
47.6	43,545	54,432	13.18	143.002	95.25	381	285.75	47.752
51	46,636	58,295	15.45	152.4	101.6	406.4	304.8	50.8
57	65,045	81,307	21.82	171.45	114.3	457.2	342.9	57.15
64	72,727	90,909	30.00	190.5	127	508	381	63.5
70	98,591	123,239	40.00	209.55	139.7	558.8	419.1	69.85
76	103,636	129,545	51.82	228.6	152.4	609.6	457.2	76.2
83	119,182	148,977	66.36	247.65	165.1	660.4	495.3	82.55
89	126,818	158,523	82.27	266.7	177.8	711.2	533.4	88.9
102	169,545	211,932	123.18	304.8	203.2	812.8	609.6	101.6



**QUENCHED & TEMPERED**



**MADE IN THE U.S.A.**